

BBHCA eNews

OCTOBER 2010

MEMBERSHIP YEAR BEGAN SEPT 1

RENEW TODAY!

(Click above for the application)

**Renew your membership now so you won't miss any further eNews!
This issue will be the last until you rejoin for the 2010–2011 membership year.**

NEXT COMMUNITY MEETING

Tuesday, November 9

7:30 pm

Bush Hill Elementary School, Cafeteria

AGENDA:

Minutes from September Meeting (Vote)

Board Reports

- Minutes
- Membership
- Treasurer

Committee Reports

- Land Use Task Force Update
- Neighborhood Watch

Old Business:

- Bush Hill Woods Historical Plaque

New Business

- Bush Hill Drive Speed Bump Proposal

GUEST: TBA

Important Voting Dates

- Voter Registration Closes: October 12, 2010 at 6:00 pm
- Satellite Voting Begins: Monday, October 18, 2010
- Absentee Ballot Applications Must Be Received by Mail or Fax: Tuesday, October 26, 2010 by 5:00 pm
- Final Day to Vote Absentee In Person: Saturday, October 30, 2010 9:00 am - 5:00 pm
- Election Day: Tuesday, November 2, 2010; Polls open 6:00 am - 7:00 pm



>> Information concerning the upcoming election can be found on the Office of Elections website, www.fairfaxcounty.gov/eb.

>> For a complete list of Candidates, Proposed Constitutional Amendments, and Fairfax County Bond Referendums, go to <http://www.fairfaxcounty.gov/eb/upcoming.htm>

Election Law Changes for 2010

Many election laws were enacted during the 2010 Virginia General Assembly, effective July 1, 2010. For a complete listing of bills passed by the 2010 General Assembly and signed into law by the Governor, go to <http://leg1.state.va.us/lis.htm>.

NEIGHBORHOOD WATCH

Sexual Assault at La Vista Drive Bus Stop

Detectives are still investigating a sexual assault that occurred just prior to 4:30 am, Wednesday, September 8. Officers were flagged down by a jogger who was alerted by the victim, a 23-year-old Franconia area woman. The victim had been waiting at a bus stop at La Vista Drive and Franconia Road. The woman reported that someone approached her from behind, grabbed and assaulted her. She suffered non life-threatening injuries and was transported to INOVA Fairfax Hospital.

The suspect is described as male, heavy-set and between 25–40 years old. He wore a white t-shirt and tan, cargo pants.

Anyone with information is asked to contact Crime Solvers by phone at 1-866-411-TIPS/8477, e-mail at www.fairfaxcrimesolvers.org or text "TIP187" plus your message to CRIMES/274637 or call Fairfax County Police at 703-691-2131.

Franconia Crime Prevention Newsletter

In the future you will need to be on the listserve in order to receive these notices. This will be a much more efficient way of sending out notices. Please continue to email me with questions or concerns. It is a very easy process to get signed up.

Please select one of the following links:

<http://www.fairfaxcounty.gov/email/lists/> or <http://infoweb.fairfaxcounty.gov/email/lists/>.

These will be posted on the website shortly.

1. Enter your email where you wish to receive notices.
2. Scroll down and select "Franconia Crime Prevention" under Public Safety. (Do not select "Franconia newsletter" as that is no longer active.)
3. Select "continue."
4. Answer the FOIA question
5. Select "subscribe."
6. You will be sent an email with instructions. Select "reply," then type in "ok".

Franconia Station Web Site

<http://www.fairfaxcounty.gov/police/stations/franconia/>

Also please continue to visit our website. Please put it into your favorites and check it often. There is a friendly competition between the Stations. I want Franconia to be number 1!

MPO Jim Reid
Crime Prevention Officer
Franconia District Station
6121 Franconia Rd
Alexandria, VA 22310
(703) 922-8263
James.Reid@fairfaxcounty.gov

Zoning and Land Use Update

(June - September 2010)

Submitted by Carol Alim, BBHCA Representative to the Lee District Land Use Committee

- **New Planning Commissioner**

Lee District has a new Planning Commissioner. James Migliaccio is replacing Rodney Lusk, who has new job responsibilities.

- **Grovedale Ramadi Family Medical Practice (June, recommended for approval 15-0-0)**

Drs. Ramade, husband, and wife MDs, plan to build a 9,000 sq foot office building at the Beulah and Grovedale. They will occupy the top floor and lease the lower level (4,000 sq feet). They estimate this use will generate 40 vehicle trips during peak hours. This building will be built with green technologies, possibly including LEED accreditation.

- **Lewin Park (June, informational presentation)**

This is a rezoning, RZ2010-0088, in conjunction with APR 08-IV-10S. Developer has assembled numerous parcels adjacent to Metro Park and the Inova Health Center. They are planning four office buildings and two parking structures. Included is an option for a hotel at the intersection of Beulah and Fairfax County Parkway in lieu of a fifth office building. This application will be back before the committee in the fall.

- **Hilltop Village Center (June, recommended for approval 18-0-0)**

Hilltop requested a signage waiver to the Comprehensive Signage Plan. Given the orientation of the building, the traffic pattern and the Wegmans, they requested a waiver to the requirements to include more signs, and some larger signs to ensure that visitors to the businesses can locate them readily.

There is considerable activity in the Springfield area over the next several meetings.

- **Panda Express (July & September, recommended for approval 12-4-0)**

This application is a request for a special exception to build a fast food establishment in an existing free-standing building. This site is located at Springfield Plaza, facing Old Keene Mill Road at the main entrance to the center. This is a vacant building that used to be a travel agency. It is located next to a Wachovia Bank. The owners plan a new facade and a minor addition.

- **Former Chi Chi's Site (September, informational presentation)**

This application is a request for rezoning, RZ 2010-0154, to rezone this 16-acre site to permit a hotel. This site is located on the north side of Old Keene Mill Road just west of the Amherst Bridge. This parcel was reviewed as part of the BRAC plan review, APR 08-IV-4FS. The plan is primarily for office and retail with an option for a hotel. This application is for a 6-story hotel with 167rooms and an adjacent open-top parking garage. These structures will cover most of the site.

- **Jenning's Toyota (September, informational presentation)**

This is an application to rezone two parcels from residential R1/R3 to C8with a Special Exception for the dealership. The current comprehensive plan allows for an automobile dealership if the development includes an athletic field on the property, which this application does. The application is to rezone the entire site with a special exception for the dealership. Part of this site was a land file; the athletic field is not on the land fill. The athletic field is adjacent to Loisdale Park. This application is scheduled for the planning commission on 28 October.

- **WMTA Bus Garage (September, informational presentation)**

This application is a Special Exception to permit a municipal maintenance facility in a floodplain. A special exception would not be required if this were Greyhound. This 17.4 acre site, zoned I6, on Cinderbed is the former site of American Precast, which was shut down by the County. WMTA plans to restore the Resource Protection Area located on the site. They will also close on of the entrances from Cinderbed. The single entrance will have a bridge over Long Branch that allows wild life to pass underneath and a guard. The closed road will be re-landscaped. This facility will be 100,000 square feet and replace the Royal Street facility. WMTA's requirement is for a building with a 50-year life. They plan to build for Silver level LEED certification.

- **Fleet Drive, LLC (September, informational presentation)**

Rezoning Application for parcels at Beulah and Fleet. Approximately three years ago several parcels were rezoned to R12 for 49 town houses. Since then, three parcels that were not part of the consolidation, agreed to sell their properties. There are still three parcels not part of the consolidated site. Developer is modifying plan to build 36 luxury town houses with request to downsize to R2 the three parcels not part of the consolidation.

<http://www.cdc.gov/flu/about/disease/>

How serious is the flu?

Flu is unpredictable and how severe it is can vary widely from one season to the next depending on many things, including:

- what flu viruses are spreading,
- how much flu vaccine is available
- when vaccine is available
- how many people get vaccinated, and
- how well the flu vaccine is matched to flu viruses that are causing illness.

Certain people are at greater risk for serious complications if they get the flu. This includes older people, young children, pregnant women and people with certain health conditions (such as asthma, diabetes, or heart disease).



Flu seasons are unpredictable and can be severe. Over a period of 30 years, between 1976 and 2006, estimates of flu-associated deaths range from a low of about 3,000 to a high of about 49,000 people.

During 2009-2010, a new and very different flu virus (called 2009 H1N1) spread worldwide causing the first flu pandemic in more than 40 years. It is estimated that the 2009 H1N1 pandemic resulted in more than 12,000 flu-related deaths in the U.S. In contrast to seasonal flu, nearly 90 percent of the deaths occurred among people younger than 65 years of age.

Who should get vaccinated?

On February 24, 2010, vaccine experts voted that everyone 6 months and older should get a flu vaccine each year starting with the 2010-2011 influenza season. CDC's Advisory Committee on Immunization Practices (ACIP) voted for "universal" flu vaccination in the U.S. to expand protection against the flu to more people. While everyone should get a flu vaccine each flu season, it's especially important that certain people get vaccinated either because they are at high risk of having serious flu-related complications or because they live with or care for people at high risk for developing flu-related complications.

Other people for whom vaccination is especially important are:

- People who live in nursing homes and other long-term care facilities
- People who live with or care for those at high risk for complications from flu, including:
 - Health care workers
 - Household contacts of persons at high risk for complications from the flu
 - Household contacts and caregivers of children younger than 5 years of age with particular emphasis on vaccinating contacts of children younger than 6 months of age (children younger than 6 months are at highest risk of flu-related complications but are too young to get vaccinated)

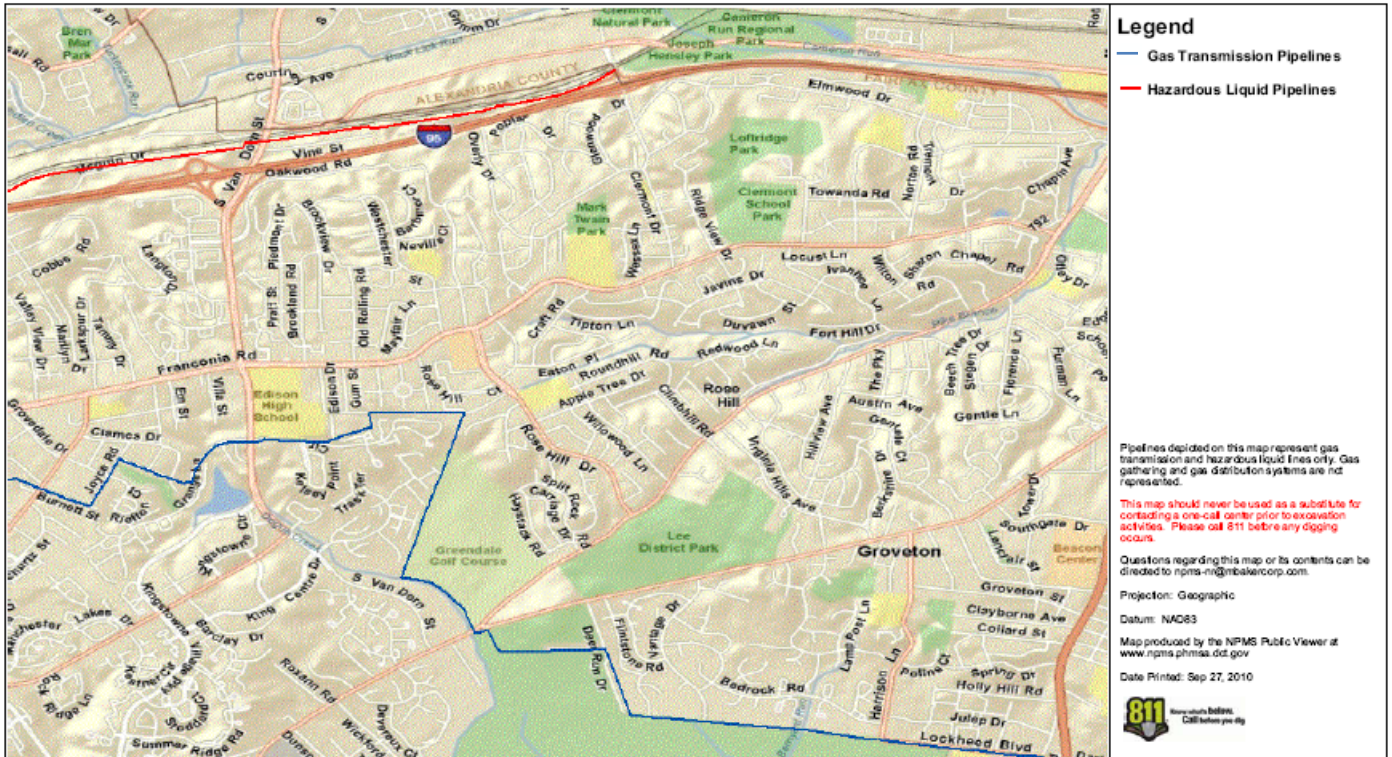
>>**Preventing the Flu: Good Health Habits Can Help Stop Germs**, go to

<http://www.cdc.gov/flu/protect/habits.htm>

Gas and Hazardous Pipelines in Near BBHCA

<http://www.npms.phmsa.dot.gov/>

In light of the gas line explosion in California, I was curious whether any gas lines crossed our neighborhood. None go through, but one snakes through the area on the other side of Franconia Road (blueline). Then an unidentified "hazardous liquid" pipeline lies along the other side of the Beltway (red line).



WANTED! BBHCA Print Newsletter Editor and Secretary

If you have experience publishing a small print newsletter with advertising or would like to learn how, the BBHCA needs you. We also need a good note taker for community and board meetings. These are both Board positions. Curious? Contact Jeannie Henry at president@bbhca.org.



Fairfax County Offers Grants up to \$5,000 to Improve Neighborhoods

“The Neighborhood Enhancement Partnership Program (NEPP) offers matching grants up to \$5,000 for projects that make communities a better place to live. The grants are available to neighborhood or civic groups, homeowners associations, and nonprofits.

Applications are due Friday, October 29.

Additional details about eligible groups and projects; how to apply; and upcoming information sessions on Sept. 20 and 21 can be found at www.fairfaxcounty.gov/cex/nepp/.

Because the NEPP is a matching grant program, organizations must contribute a matching amount of cash; in-kind donations; discounts on goods or services; and/or sweat equity. Eligible projects also must include at least 25 percent volunteer labor as part of their match.

For more information about the program, information sessions, or application process, contact Rachel Robinson, Fairfax County Department of Administration for Human Services, at 703-324-5639, TTY 711.”

Who Owns Who—The Truth Behind Many Popular “Off-the-Shelf” Organics



| Original Brand | Bought Out By |
|-----------------------------------|--------------------------------------|
| Burt's Bees | Clorox |
| Ben & Jerry's | Unilever |
| Tom's of Maine | Colgate-Palmolive |
| Stoneyfield Farm Yogurt | Danone |
| Horizon Organic | Dean Foods Co. |
| Odwalla, Glaceau | Coca-Cola |
| Naked Juice | Pepsi |
| Kashi | Kellogg's |
| Back to Nature | Kraft Foods (a subsidiary of Altria) |
| Cascadian Farm | General Mills |
| Barbara's Bakery | Weetabix |
| Mother's | Pepsi |
| Health Valley and Arrowhead Mills | Hain Celestial Group |
| Dagoba Chocolate | Hershey Foods |

“Marketing strategies have been fooling us to trust that the niche brands continue to be small, environmentally conscious businesses that combine ecologically sound practices with a political agenda to put products out on the market under a business model of ‘the Greater Good.’

“In fact, they are frequently cogs in the giant corporate wheel. I like to refer to this ‘other’ business model as ‘We’ve Been Had.’ It is time for we, the consumer, to question how much the ownership and neglectful marketing of these ‘pseudo’ responsible brands warrant crossing them off our shopping list.”

(Source: “Burt's Bees, Tom's of Maine, Naked Juice: Your Favorite Brands? Take Another Look,” Organic Consumers Association, March 2009. http://www.organicconsumers.org/articles/article_17306.cfm)



EVENTS

Coping with Chronic Illness

Monday, October 25

City of Fairfax Regional Library, 10360 North Street, Fairfax.

If you have a chronic health condition such as arthritis, heart disease, or diabetes and would like to become a workshop leader for Fairfax County's new program, *You Can! Live Well, Virginia!*, you can now sign up for a free six-week workshop that helps you and others take control of your medical care and improve your ability to handle fatigue and frustration. The goal of the program is to **train the trainer**. For more information and to register, call Colleen Turner at 703-324-4589.

Future BBHCA Meetings (Tuesday, 7:30 pm)

Bush Hill Elementary School (Cafeteria)

| | |
|------------------|-----------------------|
| November 9, 2010 | TBA |
| January 11, 2011 | TBA |
| March 8, 2011 | TBA |
| May 10, 2011 | TBA + BBHCA Elections |

West Virginia History and Gambling Tour!

Saturday, November 20

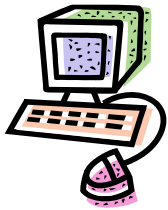
Franconia Museum, 6121 Franconia Road, Alexandria, VA

Start the day at 8 a.m. with coffee, donuts at the Franconia Museum. Board a comfortable rest-room equipped motor coach for the trip to the local Laurel Grove historic site and then the Jefferson County Museum in Charles Town. Enjoy a buffet lunch at the Hollywood Casino and then gamble with a \$20 FREE Play card at the slots or at the tables for a few hours. We'll end the day overlooking Harper's Ferry, the Potomac and the Shenandoah Rivers

SPECIAL ADDED ATTRACTION: While in Charles Town, we'll show you the court house where John Brown was convicted and the spot where he was hanged. The Jefferson County Museum is a treasure trove of displays and artifacts from the Revolutionary War and Civil War eras.

COST: \$100 each. Includes Buffet lunch and a \$20 FREE play card for slots at Hollywood Casino and a fast-food value card per person on the way home, as well as the entrance fee to each historic site.

Contact Don Hakenson at 703.971.4984



LINKS TO KEEP

Recently Adopted Zoning Amendments

<http://www.fairfaxcounty.gov/dpz/zoningordinance/adopted/>

Zoning Ordinance amendments that have been adopted since the publication of last Zoning Ordinance Supplement.

Extraordinary Uses for 16 Ordinary Household Items

<http://www.womansday.com/Articles/Shelter/Organizing-Cleaning/Extraordinary-Uses-for-16-Ordinary-Household-Items>

Woman's Day gives practical tips for turning standard household items into unexpected money-saving uses. For example, use flat bottomed coffee filters to line your flower pots. Wrap a cloth lightly soaked in vinegar around hard cheese to keep it from molding. Be surprised!

Emergency Water Storage

<http://www.nationalterroralert.com/safewater/>

"Water Storage is important. Having an ample supply of safe, clean, purified water is a top priority in an emergency.

A normally active person needs to drink at least two quarts of water each day. Hot environments can double that amount. Children, nursing mothers and ill people will need even more. You will also need water for food preparation and hygiene. Store a total of at least one gallon per person, per day. You should store at least a two-week supply of water for each member of your family."



To learn how to store and maintain a viable water supply during an emergency, read this important information from Homeland Security today. Your life, and those of your loved ones, may depend on it.

BBHCA 2010–2011 Board

President: Jeannie Henry president@bbhca.org

VP Newsletter: Sarah Kelly newsletter@bbhca.org

VP Membership: Richard Frederick membership@bbhca.org

Treasurer: Joan Akins treasurer@bbhca.org

Secretary: Deborah Moore secretary@bbhca.org

eNews

Editor: Sharada Gilkey eNews@bbhca.org

This electronic newsletter is sent to current members of the Brookland-Bush Hill Civic Association (BBHCA). If you do not wish to receive this or any other e-mails from BBHCA, respond to eNews@bbhca.org and enter "unsubscribe" in the subject line. The views expressed in eNews do not necessarily reflect the views of the Brookland-Bush Hill Civic Association or its Board of Directors.

Brookland-Bush Hill Civic Association

Alexandria, VA 22310

www.bbhca.org

© 2010 Brookland-Bush Hill Civic Association. All rights reserved.